

AffinityWater

Water Resources Management Plan (WRMP)

Dr Ilias Karapanos
Head of WRMP

15 September 2025



Water Resource Management Plan (WRMP)

- Statutory requirement to produce a WRMP every 5 years
- It sets out how we intend to maintain the balance between water supply and demand for a minimum 25 years
- Our plan provides a reliable, resilient, efficient and affordable water supply to our customers to 2075
- Produced in conjunction with Water Resources South East (WRSE) and Water Resources East (WRE)
- Our WRMP24 was published on 18 October 2024 following instruction from Defra
- It intersects with Water Industry National Environment Programme (WINEP), Price Review 24 (PR24) and Long-Term Delivery Strategy (LTDS)

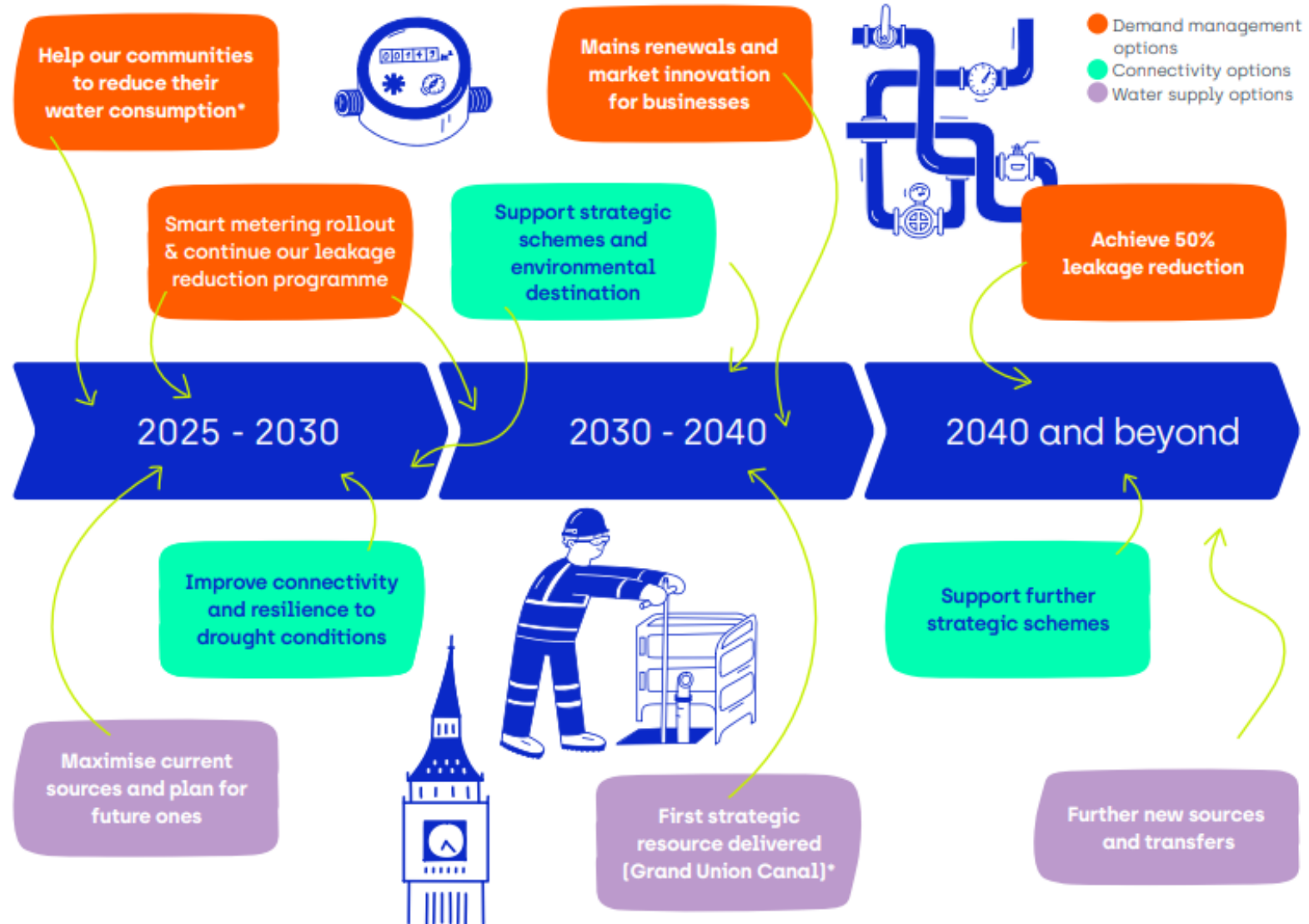


Our plan in summary

We have worked collectively as one of the six WRSE member companies, as well as with WRE, to develop a plan that both delivers for our Affinity Water customers and the southeast and eastern regions as a whole. Our plan provides an objective and evidence-based solution to meet our customers' future water needs.

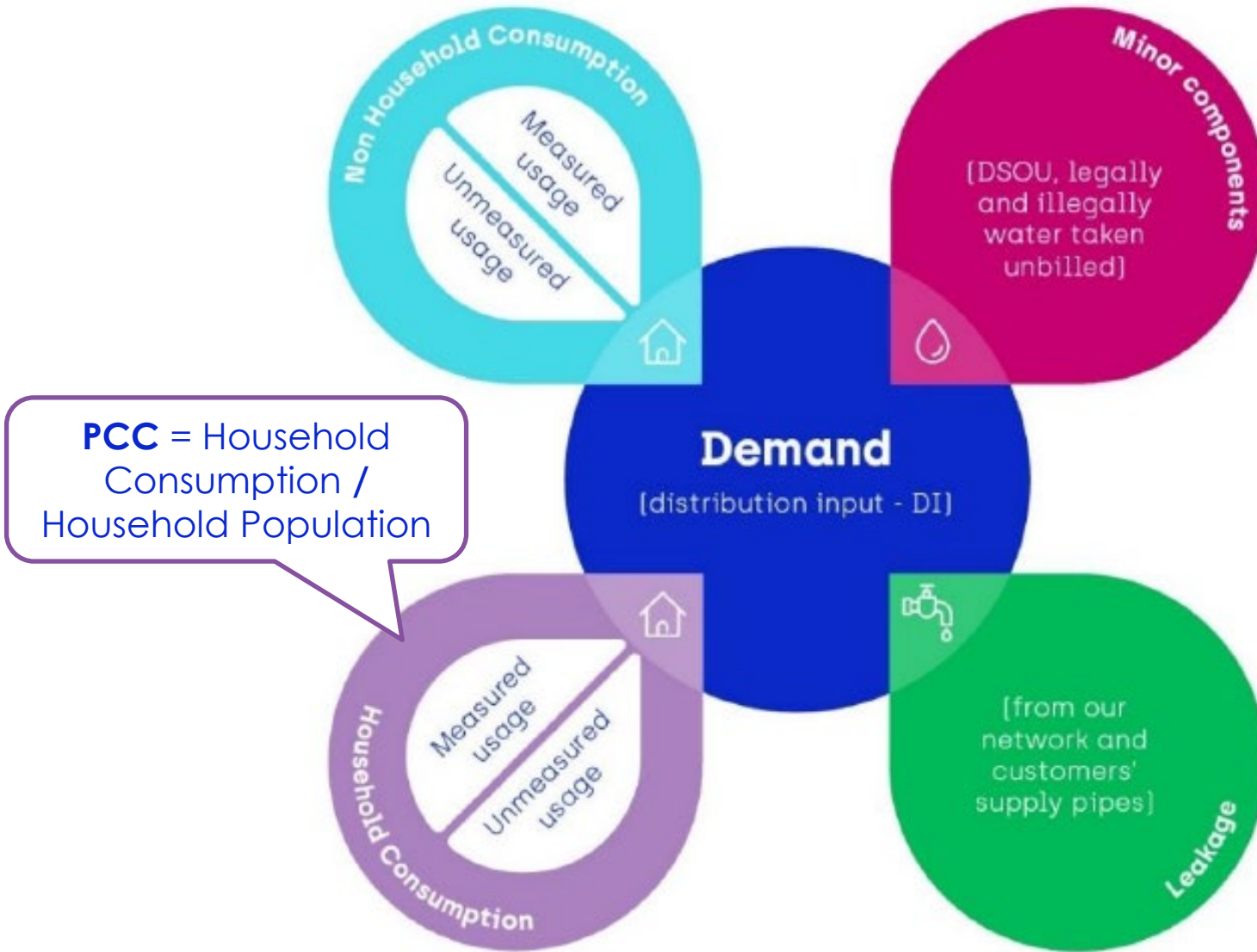
We have looked beyond the boundaries of the company and identified the options that will deliver the most benefit to our customers, society, and the environment, now and in the future. Our plan fully reflects both the WRSE and WRE regional plans.

We will continue to engage and support our customers across the whole planning period, up to 2075.



*These are areas that have changed in response to our consultation

Demand for water



Challenges

- Population growth
- High PCC
- Leakage reduction
- Climate Change
- Growth – AI data centres

Manage demand for water

2025 - 2030

2030 - 2040

2040 and beyond

Smart metering rollout

- Install 400,000 smart meters for customer households and businesses
- Help our communities to reduce their water consumption (to achieve 110 l/h/d per capita consumption (PCC) by 2050)
- Active leakage control - finding and fixing leaks within the network (this includes fixing leaks on the communication and supply pipes that connect our customers to the network)
- Reduce leakage on business premises (alterations and subsidised repairs)
- Enable businesses to reduce water use (self-audits and retailer audits)

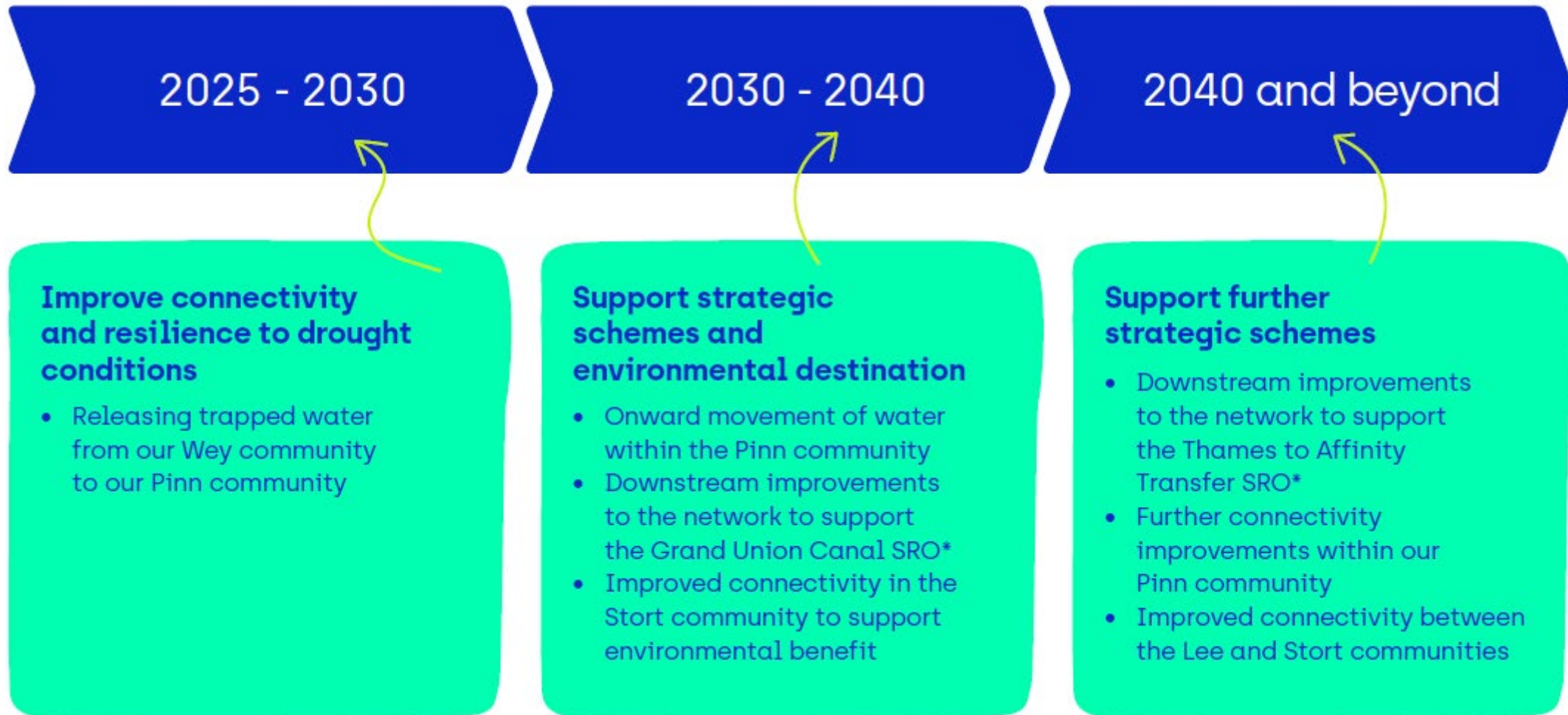
Mains renewals and market innovation for businesses

- Install a further 1,100,000 smart meters for customer households and businesses
- Continue active leakage control
- Begin mains renewals programme (to further reduce leakage) at slow pace to keep costs and disruption low
- Encourage water recycling for business customers
- Encourage businesses to consider water efficiency actions (incentive approaches to provide rebates, supported by information and accreditation)
- Government-led minimum standards on water-using goods and building regs initiatives

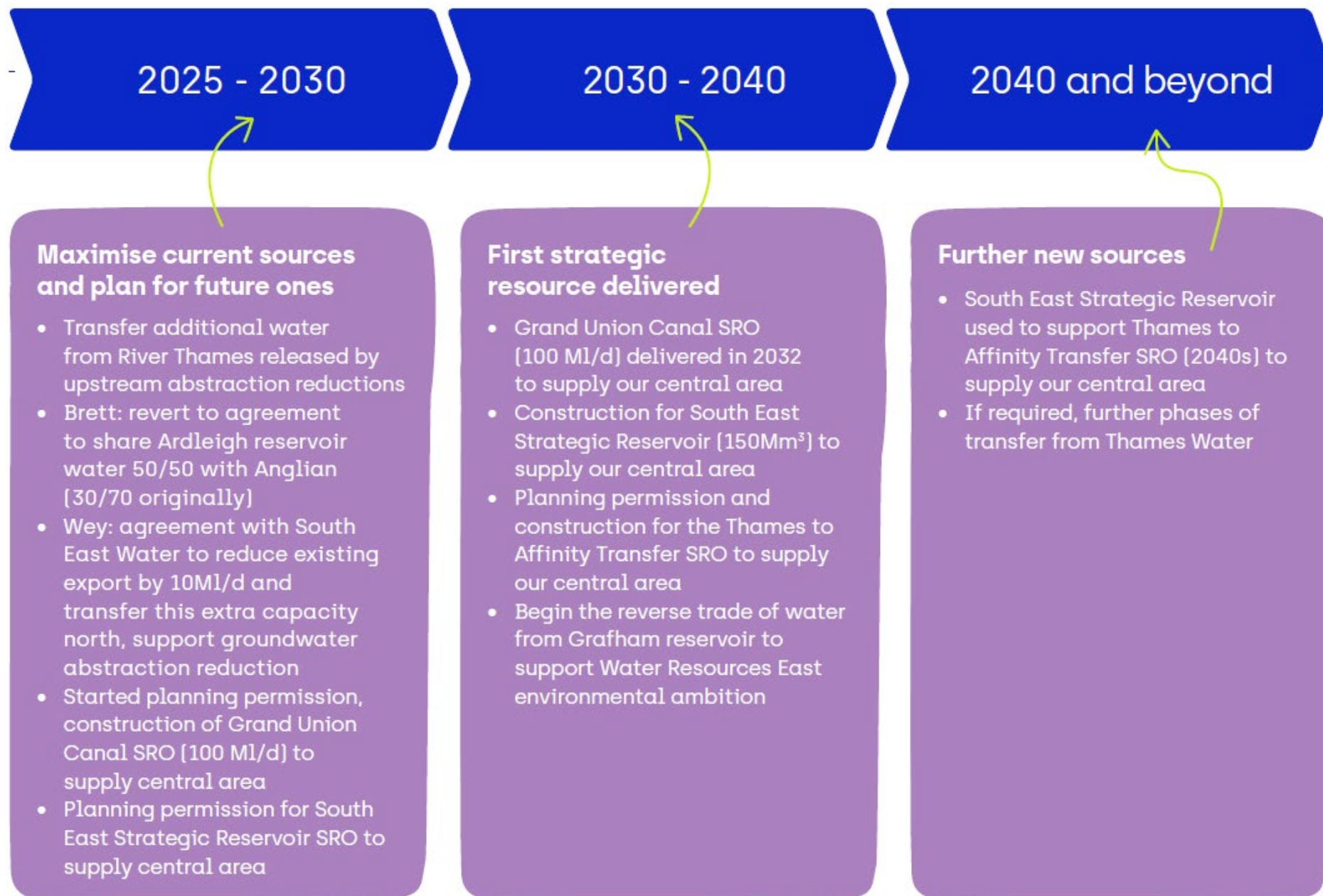
Achieve 50% leakage reduction

- Continue with mains renewals to reach 50% leakage reduction while keeping costs and disruption as minimal as possible
- Continued government-led minimum standards and building regulations initiatives

Enhance network connectivity



Manage the supply of water

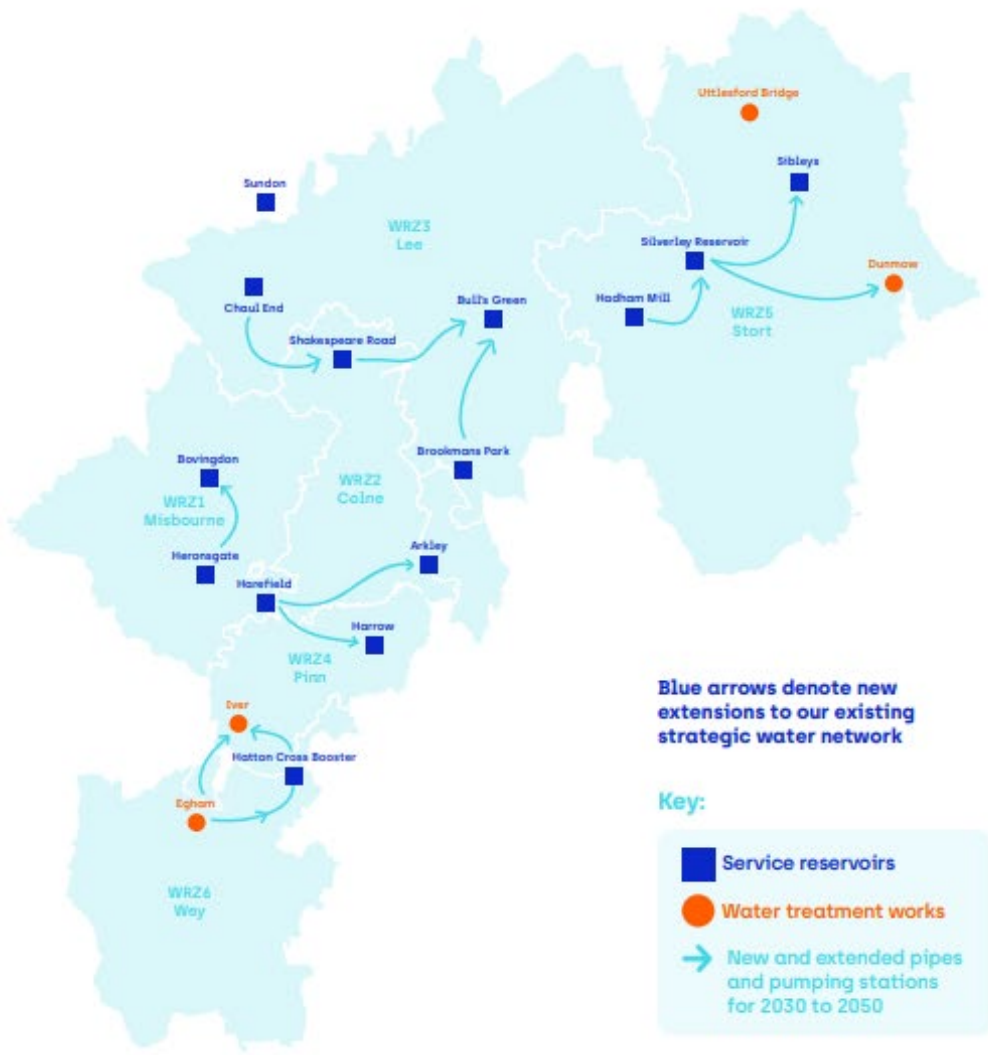


Unlock surplus & identify new supply options

Schemes in your area



Extending movement of water around our communities

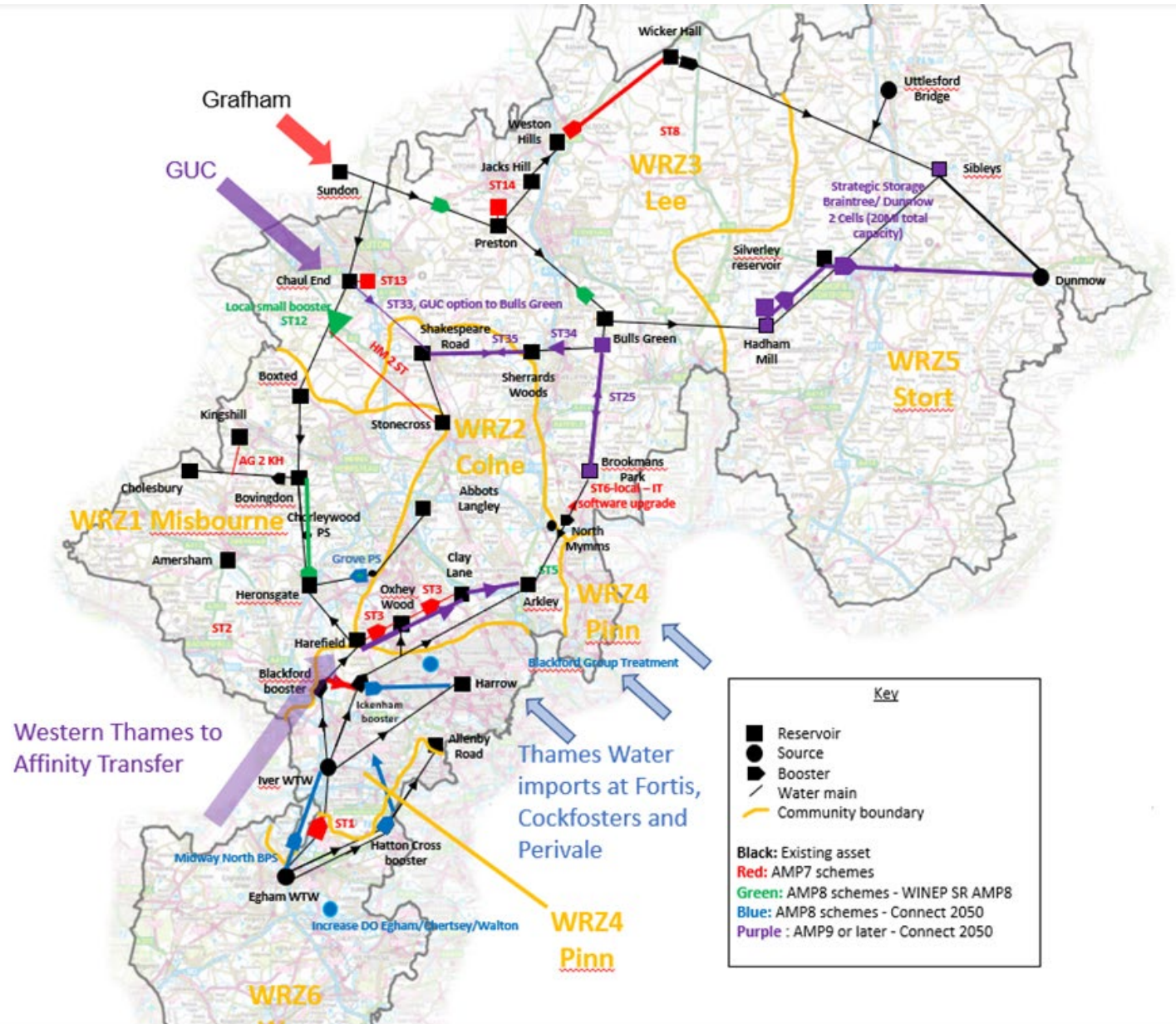


Grand Union Canal SRO



Connect 2050

- Series of internal interconnectors built to support the SROs and move water within our Central region
- Continues throughout the planning period all the way to 2050



Baldock development

- Any new demand will be accommodated through a combination of internal and external transfers
- This will require additional network reinforcement (e.g. new booster stations)
- No additional local groundwater abstraction will take place as the local abstraction licences have been capped to recent actual
- The source of the water for any new development will be a combination of Grafham-derived water and other groundwater transferred from neighbouring zones as a displacement
- New demand already forecasted in our WRMP24
- Water pressure – we have to meet certain statutory targets for every supply zone. Pressure in the Baldock area is well within the targets.

WRMP24 documents

<https://affinitywater.uk.engagementhq.com/wrmp>



AffinityWater

Thank you

Any Questions?

